

SAFEPAK CORPORATION

1991 NW Upshur, Suite "I"

Portland OR 97209

503-542-0935 office 503-542-0938 fax www.safepakcorp.com

INSTALLATION INSTRUCTIONS

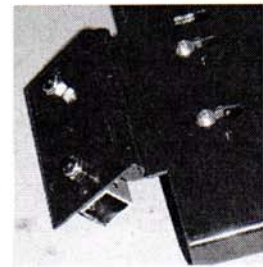
CASHBAR FOR DIEBOLD OPTIVA 740/750/760

The SafePak Universal Cashbar prevents unauthorized access to ATM Cash Cassettes. The Cashbar Hinge is mounted on the left side of the pick module. The Lock Plate is mounted on the right side of the module. When unlocked, the Cashbar swings open like a door.

IMPORTANT! Before starting the installation, hold the Cashbar up in front of the cassettes and mark the proper position of the Cashbar to block all cassettes and the divert bin. Normally the aluminum hinge bracket adapter is about 1/2"-3/4" lower than the top of the second cassette (see photo). When marking and drilling the holes for the Hinge Bracket and Lock Plate, remember that the heads of the bolts will be on the inside of the pick module and should be located in the "channel" areas on the side of the cassette...to allow the cassette to be inserted and removed easily. Make sure that the Cashbar can be closed without touching the cassettes, and that the ATM door will close without touching the Cashbar. The main body of the Cashbar has some slotted holes to do final alignment adjustments. The vertical bar can be adjusted, using the pre-drilled holes...or you may drill new holes.

1. Before starting installation, unbolt the Cashbar hinge from the main body of the Cashbar (using the enclosed security bit) and re-attach it for a 760 ATM...as shown in figure "1". Do not tighten the bolts, too tight, because later you will need to make some adjustments to align the Cashbar with the lock bracket.
2. Attach the aluminum hinge bracket adapter to the pick module metal flange as shown in figure "2", generally about 1/2"-3/4" below the top of the second cassette. Allow some space on the right side of the adapter for the bolt heads to clear the path of the cassette as it is inserted and removed.
3. Attach the Cashbar to the aluminum adapter with two bolts as shown in figure "3". The lock nuts are on the outside.
4. Mark and drill holes to mount the Lock Plate on the right side of the pick module as shown in figure "4". To determine the best mounting position, insert the Lock Plate into the Cashbar itself and lock it in. With the Cashbar in the closed position, hold the lock plate up against the pick module. REMOVE THE CASSETTE BEFORE DRILLING. Mark and drill two (2) bolt holes so that the bolt heads will be in the "channel" part of the cassette, allowing the cassette to be inserted and removed easily.
5. Adjust the Cashbar body (left and right) to properly align with the lock plate, and tighten all adjustment bolts.

For help during the installation call SafePak at 503-699-5141.



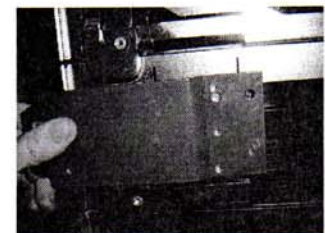
1. Unbolt and change hinge configuration.



2. Attach hinge bracket adapter to pick module.



3. Attach Cashbar hinge to the adapter.



4. Attach the lock bracket.



5. Adjust the alignment of the Cashbar